

# Welcome

Thank you for attending tonight's open house.

The purpose of this open house is to give you an opportunity to learn about several projects the City of Nampa is working on:

- 12th Avenue Safety & Access Study
- Nampa High School Pedestrian & Safety Project
- Multiple bike and pedestrian safety projects throughout the City

Please sign in to let us know you were here! Each project has display boards and staff available to answer questions. Comment forms for each project are separate. We appreciate your input!



# 12th Ave. Safety & Access Study

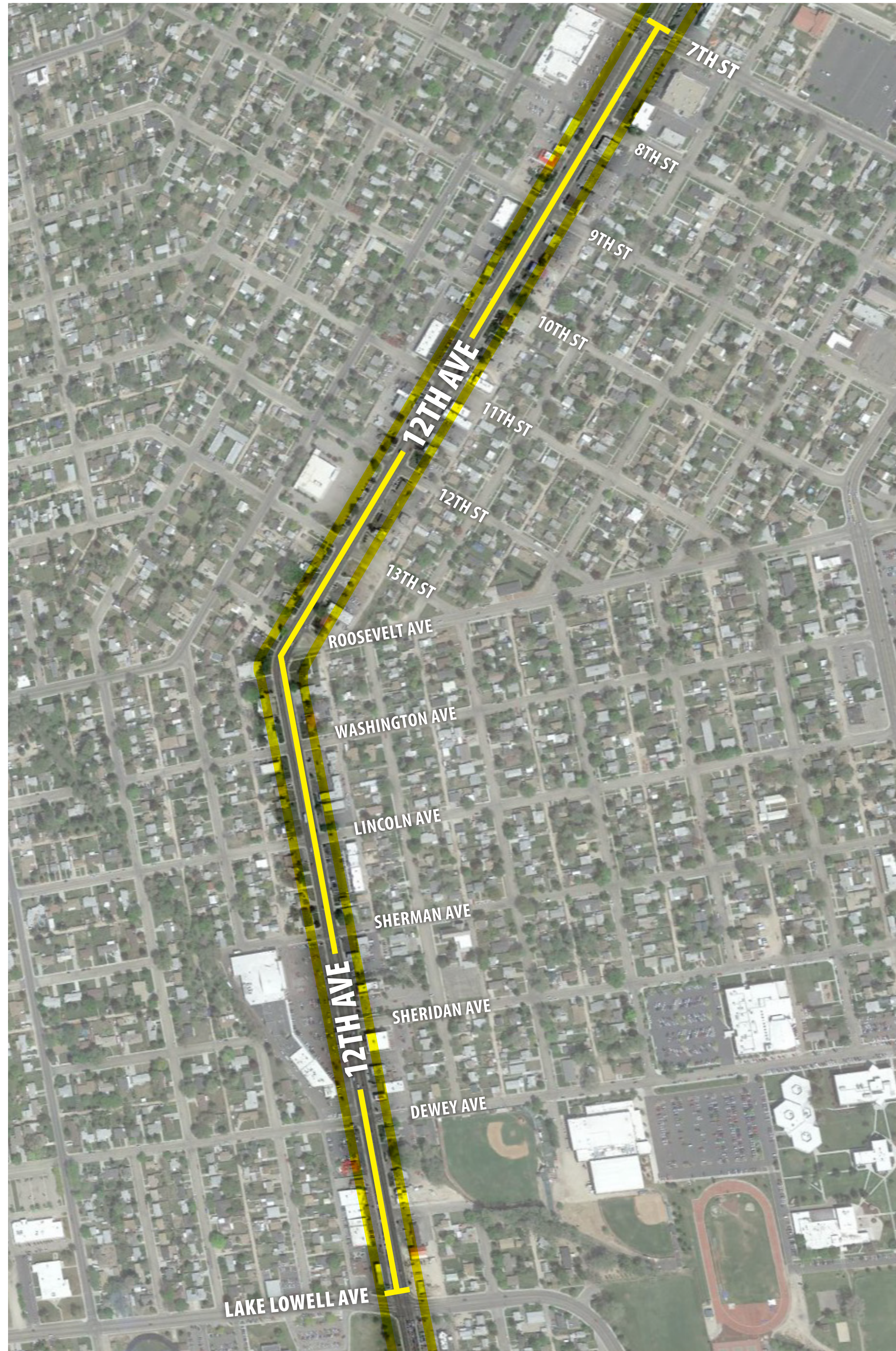
The purpose of this open house is to give you an opportunity to:

- Review the recommendations of the 12th Avenue Safety & Access Study
- Learn about the first three priority projects ready for design and construction:
  - Signalized Pedestrian Crossing at 11th Street South
  - Signalized Pedestrian Crossing at Sherman Avenue
  - Median Installation from Dewey Avenue to Lincoln Avenue
- Discuss future projects and next steps





# Study Overview



The City of Nampa and the Idaho Transportation Department recently completed a study to identify safety improvements along 12th Avenue, between 7th Street South and Amity / Lake Lowell Avenue. The goals of the study were to:

- Identify transportation safety issues in the corridor for all modes of travel (vehicle, pedestrian, bicycle)
- Gather input from various corridor users to help the project team understand existing safety concerns and recommend improvements
- Recommend and prioritize safety improvements

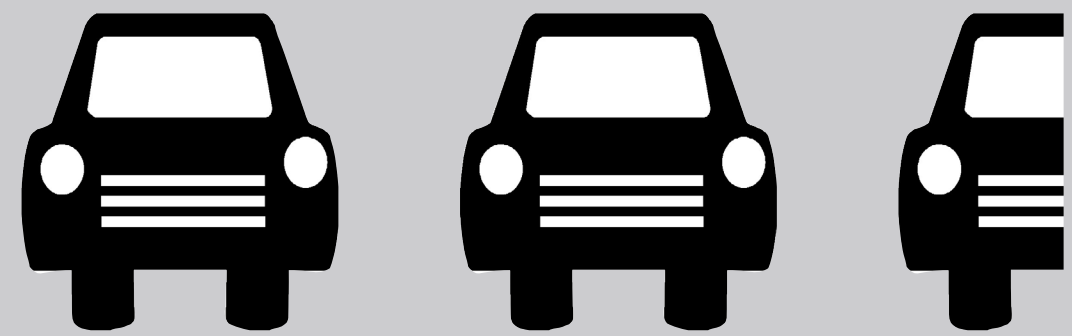
The study was adopted by the Nampa City Council on November 7, 2016 as guide for future staff consideration.



# Corridor Characteristics

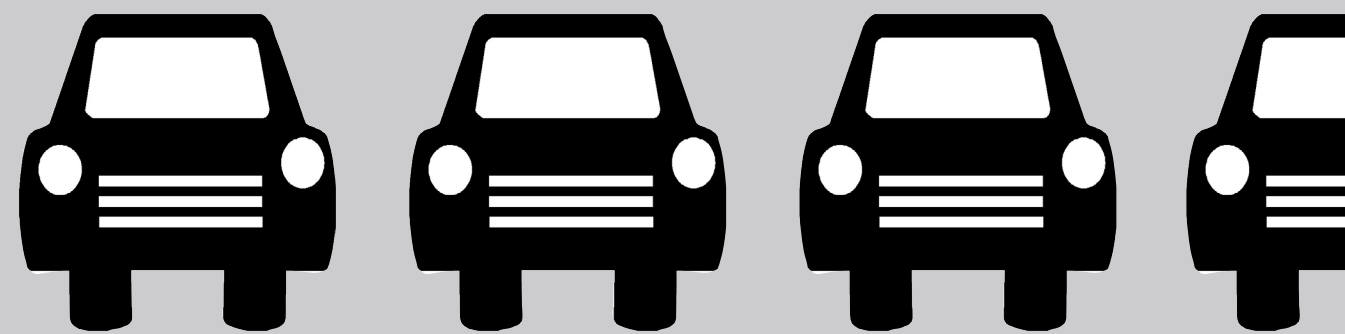
## Traffic Volumes

2015\*



\*Per the COMPASS Regional Travel Demand Model, existing volumes are approximately 25,000 vehicles per day (VPD).

2040\*\*



\*\*Per the COMPASS Regional Travel Demand Model, traffic volumes in 2040 are forecasted to be approximately 35,000 vehicles per day.

*National criteria indicate medians are needed when number of vehicles exceed 24,000 VPD.*

## Bike and Pedestrian Mobility

- No identified bicycle amenities
- 2 existing signalized crossings (Lake Lowell and 7th)
- 2 existing marked crosswalks (Dewey and Sherman)
- Requires crossing 5 lanes of traffic
- 12 bus stops along the corridor



## Crashes

- Total of 239 crashes between 2010 and 2014
- 24 severe injuries, 1 fatality
- Most crashes occur at/near:
  - Lake Lowell Avenue
  - Dewey Avenue
  - Sherman Avenue
  - Sheridan Avenue
  - 7th Avenue South



## Accesses & Geometry

- Drivers currently encounter an access every 1-2 seconds along this 1-mile stretch, which include:
  - 85 existing private driveway approaches
    - 65 permitted
    - 20 unpermitted
  - 15 public streets
- Reduced speed (25 mph) curve at Roosevelt



# Improving Safety

## Goals

## Guiding Principles

## Solutions

Improve Bike  
and Pedestrian  
Safety

Make 12th Avenue safer to cross

Identify future signalized intersection location

Install 2 pedestrian crossing signals

Reduce  
Crashes

Increase driver anticipation

Implement commercial driveways

Add landscape buffers, curb stops & improve  
parking layout

Improve curve at Roosevelt

Reduce conflict points

Reduce number of left turns

Increase sight distance

Evaluate landscaping and sign locations during  
re-development



# Timeline

Winter 2015 -  
Spring 2016

## Data Gathering

- a** *Interview Stakeholders*
- b** *Conduct Existing Conditions Inventory*
  - *Crash data*
  - *Traffic volumes*
  - *Bike and pedestrian volumes*
  - *Access*
  - *Connectivity*
- c** *Review Design Guidelines*
  - *City of Nampa*
  - *Idaho Transportation Department*
  - *National Design Standards*

Summer 2016

## Safety Improvements

- a** *Identify Areas of Safety Concern*
- b** *Develop Improvement Recommendations*
- c** *Gather Public Input*
- d** *Refine and Prioritize Improvements*
- e** *Prepare Safety and Access Report*

November 2016

## Adopt Study

Winter 2016 -  
Summer 2017

## Design and Construct Improvements

- *Signalized Pedestrian Crossing at Sherman Ave.*
- *Signalized Pedestrian Crossing at 11th St. South*
- *Center Median from Dewey Ave. to Lincoln Ave.*

Ongoing

Implement remaining improvements,  
as funding allows

# Study Recommendations

<i>Priority</i>	<i>Description</i>
Ongoing A	Improve Sight Distance Issues
Ongoing B	Improve and Consolidate Driveway Approaches/ Landscape Buffers
1	Install Pedestrian Crossing at Sherman and Install Median from Sheridan to Lincoln
2	Install Pedestrian Crossing at 11th
3	Install Median from Lake Lowell to Sheridan
4	Install Median from 10th to 7th
5	Improve Curve on 12th Ave., Realign Roosevelt Ave, and Install Median from Lincoln to 13th
6	Install Median from 13th to 10th
7	Install Traffic Signal at 13th
8	Upgrade Street Lighting along Corridor



# Coming Soon!

The City of Nampa has received grant funding to install two signalized pedestrian crossings (included in Priorities 1 and 2). Design is complete and construction is expected in the spring of 2017.

The City of Nampa has also obtained funding to install medians between Dewey Ave. and Lincoln Ave. Design is beginning now and construction is expected in the summer of 2017.

The City will continue working to obtain funding to implement the remaining recommended improvements.

